


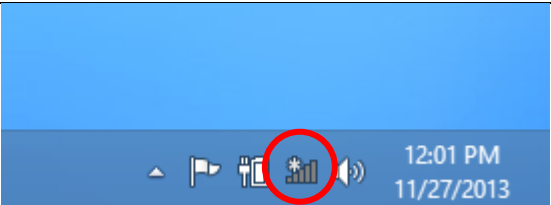
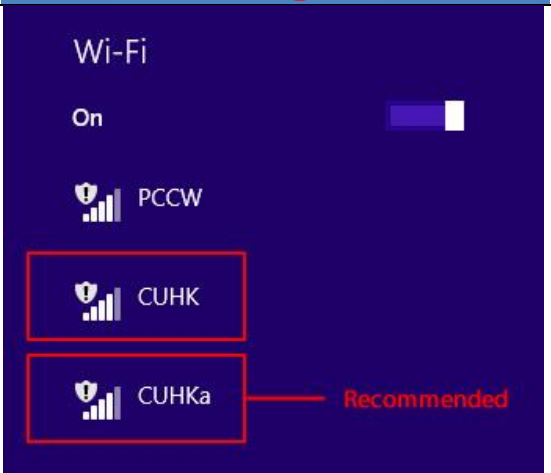
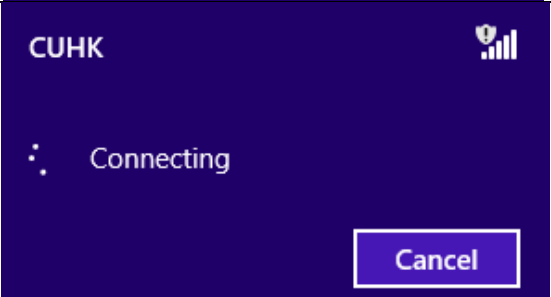
Connect to CUHK / CUHKa with a Windows PC / Notebook

(This user guide suits Windows 8.1 the best and is applicable to Windows 7/10 with slight difference.)

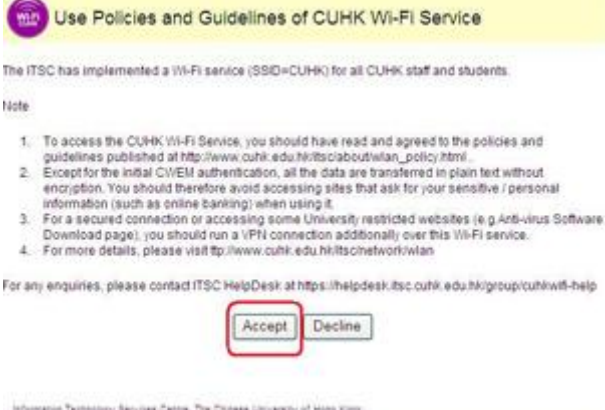


Table of Content

- A. Detect WiFi Signal of CUHK / CUHKa
- B. Connect to CUHK / CUHKa
- C. CUHKa Settings to Choose 5 GHz Bandwidth (To be done once only)


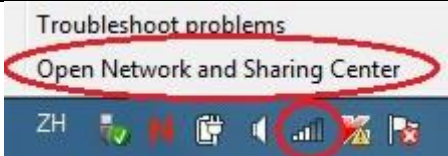
A. Detect WiFi Signal of CUHK / CUHKa

<p>1. If you have a hardware WiFi switch on your device, make sure it is turned on.</p> <p>Click the WiFi icon  on the taskbar.</p>	
<p>2. Select CUHK / CUHKa* from the available wireless networks and click Connect.</p> <p>*CUHKa is recommended for faster speed and less interference. If this is your 1st time to use CUHKa, please follow the steps in Part C here to change your adapter setting.</p>	
<p>c. While connecting, you will see the following screen. Be patient to wait for successful connection.</p>	

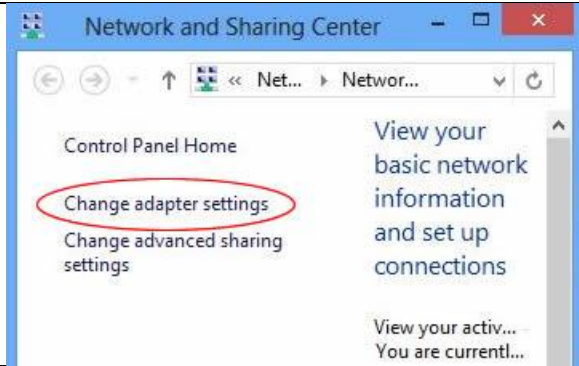
B. Connect to CUHK / CUHKa

<p>1. Open a web browser and visit any webpage e.g. The HKSAR page at http://www.gov.hk.</p> <p>Note: You can browse CUHK homepage (http://www.cuhk.edu.hk) without logging into CUHK / CUHKa.</p>	
<p>2. You will be re-directed to Use Policies and Guidelines of CUHK Wi-Fi Service. Click Accept to continue.</p>	
<p>3. At Login to CUHK Wi-Fi Service page, enter your Computing ID* and your OnePass (CWEM) password. Then, click Log In.</p> <p>*Computing ID:</p> <ul style="list-style-type: none"> • s1155xxxxxx for students • bxxxxxx for staff 	
<p>d. A window showing "Login successful" will pop up.</p> <p>And you may enjoy CUHK Wi-Fi service from now on.</p>	

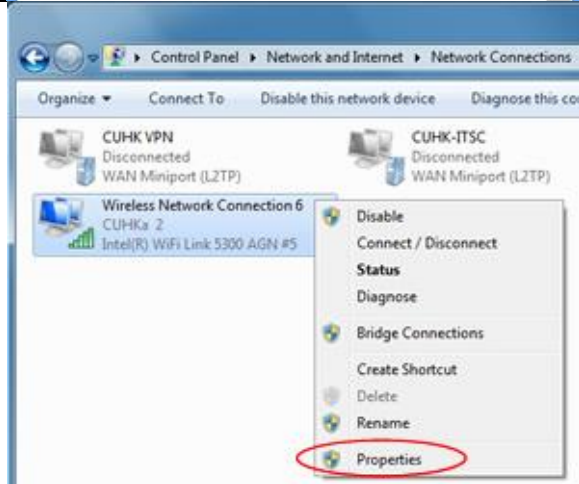
C. CUHKa Settings to Choose 5 GHz Bandwidth (To be done once only)

<p>1. If you have a device which supports 5 GHz (a/b/g/n frequency) band, try to switch towards the preferred band. Faster speed, less interference. (Not applicable to the network card version older than Atheros card).</p>	
<p>2. Right-click the WiFi icon  on the taskbar. Then, click Open network and Sharing Center.</p>	

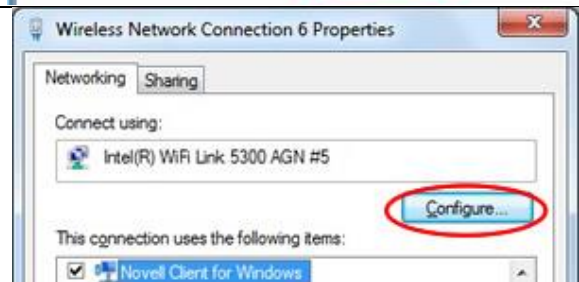
3. Choose **Change adapter settings** on the left menu column.



4. Now right-click the CUHKa WLAN adapter **Wireless Network Connection** and choose **Properties**.

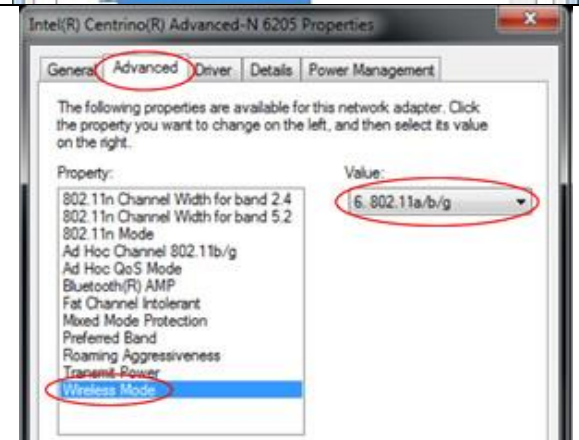


5. Under **Networking**, click **Configure**.



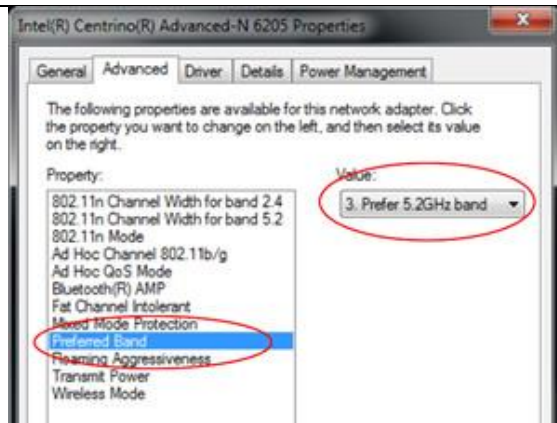
6. Choose the **Advanced** tab.

For Intel network card,
Choose **Wireless Mode** in the left menu column
and set the **Value** on the right as **802.11 a/b/g**
or at least **802.11 a/g**.



7. Then, choose **Preferred Band** in the left menu column and set the **Value** as **3. Prefer 5.2GHz band**.

Click **OK** to apply changes.



Last Update: 23 June 2016

Copyright © 2016. All Rights Reserved. Information Technology Services Centre ,

The Chinese University of Hong Kong